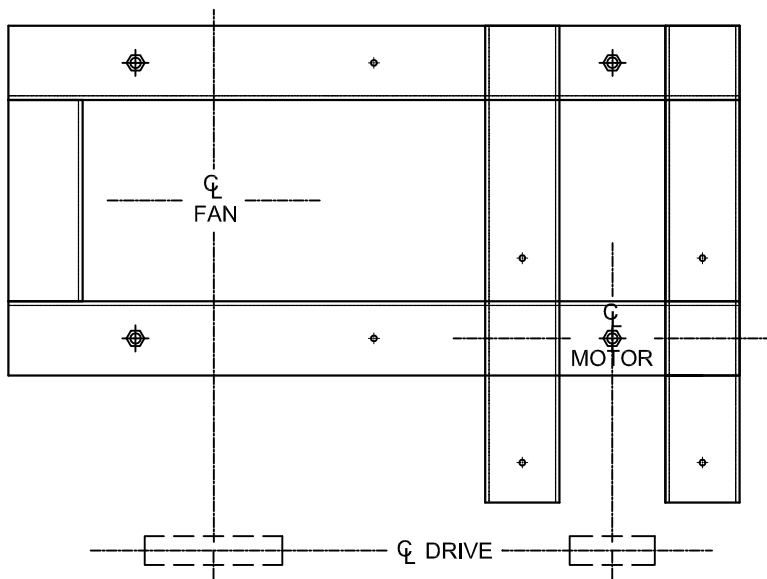


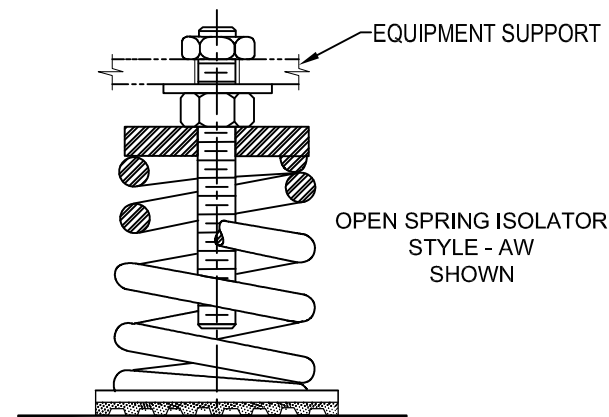
REV.	DESCRIPTION	DATE	BY



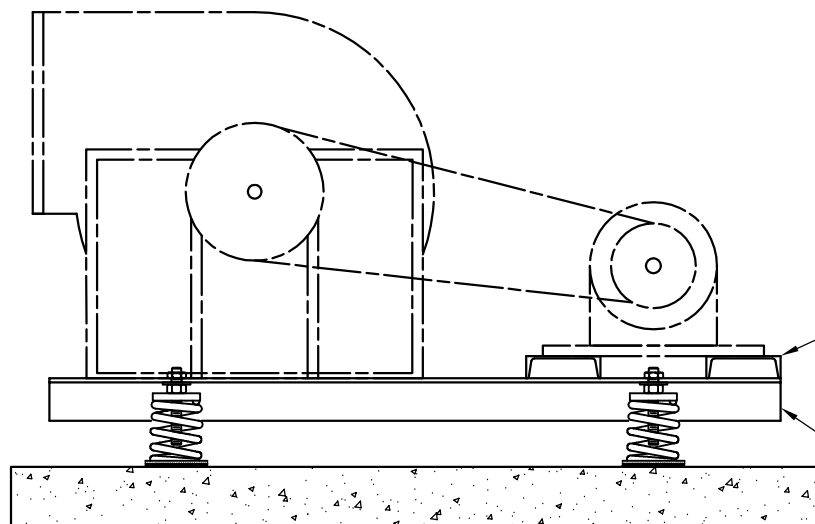
NOTE:

STEEL MEMBERS ARE STANDARD AISC STRUCTURAL SECTIONS SIZED TO PROPERLY SUPPORT LOAD AND TO LIMIT STEEL BEAM DEFLECTION TO 0.05" MAXIMUM DUE TO BELT PULL AND STARTING TORQUE.

WHEEL DIAMETERS 12-1/4" TO 36-1/2" ANGLE CONSTRUCTION
40-1/4" TO 54-1/4" ANGLE OR WIDE FLANGE CONSTRUCTION 60"
AND LARGER WF AND CHANNEL CONSTRUCTION.



BRACKETS NOT REQUIRED FOR ANGLE CONSTRUCTION.
WF BASES FURNISHED WITH HEIGHT-SAVING BRACKETS.



NEMA STANDARD
MOTOR SLIDE RAIL
IF REQUIRED (BY OTHERS)

STEEL MEMBER VARIES.
ANGLE CONSTRUCTION SHOWN

OTHER MATERIALS, COMPOUNDS, OR FINISHES WITH EQUAL OR SUPERIOR PROPERTIES MAY BE SUBSTITUTED AS THEY BECOME AVAILABLE.

CERTIFIED FOR:

JOB NAME: _____

CUSTOMER : _____

CUSTOMER P.O.: _____

SALES ORDER: _____

MODEL SFB INTEGRAL STEEL FAN AND MOTOR BASE 5 INCH DEFLECTION WITH NON-SEISMIC ISOLATORS



THE VMC GROUP
The Power of Together
Bloomingdale, NJ 07403
Houston, TX 77041

SCALE:

NONE

SHEET:

1 OF 1



DRAWING NO.:

REVISION